

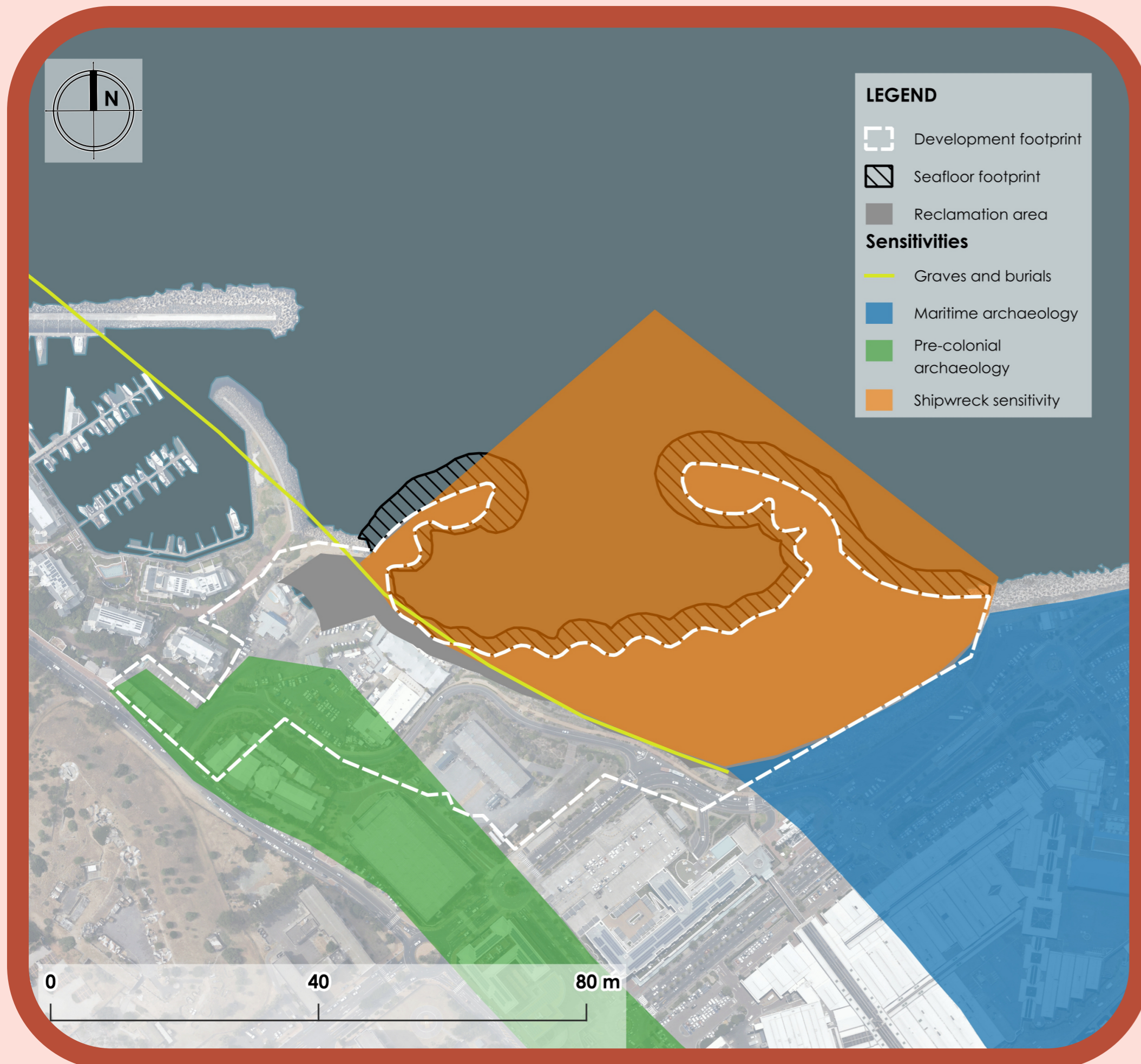
# HERITAGE IMPACT ASSESSMENT

## PROPOSED DEVELOPMENT OF THE GRANGER BAY PRECINCT AND LAND RECLAMATION AT THE V&A WATERFRONT

### BACKGROUND & SENSITIVITIES

A **Heritage Impact Assessment** was undertaken by **Cindy Postlethwayt Heritage Practitioner**.

A **Visual Impact Assessment** by **Megan Anderson Landscape Architect** and an **Archaeological Impact Assessment** by **TerraMare Archaeology** were also undertaken as informants to the HIA.



Pre-colonial **archaeological material** could survive under the later landfill along the former coastline within the project site. Unmarked burials may be present in the same areas of the site that are archaeologically sensitive.



There is a possibility that at least some **shipwrecked vessels** may be located within the project area, although their exact **location is unknown**.



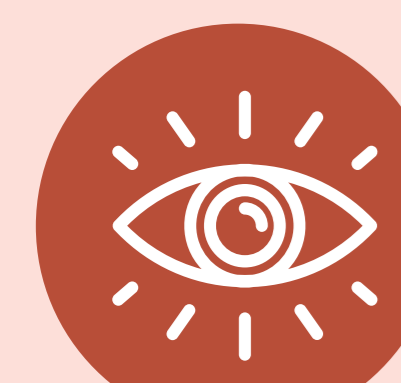
The slipway on site has social and historical significance. The slipway is one of the very few safe entry points into Table Bay for small boats and the general public. Managed, non-exclusive **access to the ocean** is regarded as being of high significance to these users (graded as **IIIC**).



The **'Arc of Fire' view cone** from Fort Wynyard is of historical importance acknowledging the function of the battery. Buildings within this Arc of Fire are limited to a **height of 21.5m above mean sea level**.



The primary visual significance on site is the spatial and visual **interaction with the water's edge**. Public pedestrian access to the water needs to be enabled.



The sensitive visual receptors include the immediately adjacent **residential areas**, as well as **Beach Road** which is a **scenic route**. Other visual sensitivities include the sense of place and character of the landscape.

