

# SITE CONTEXT

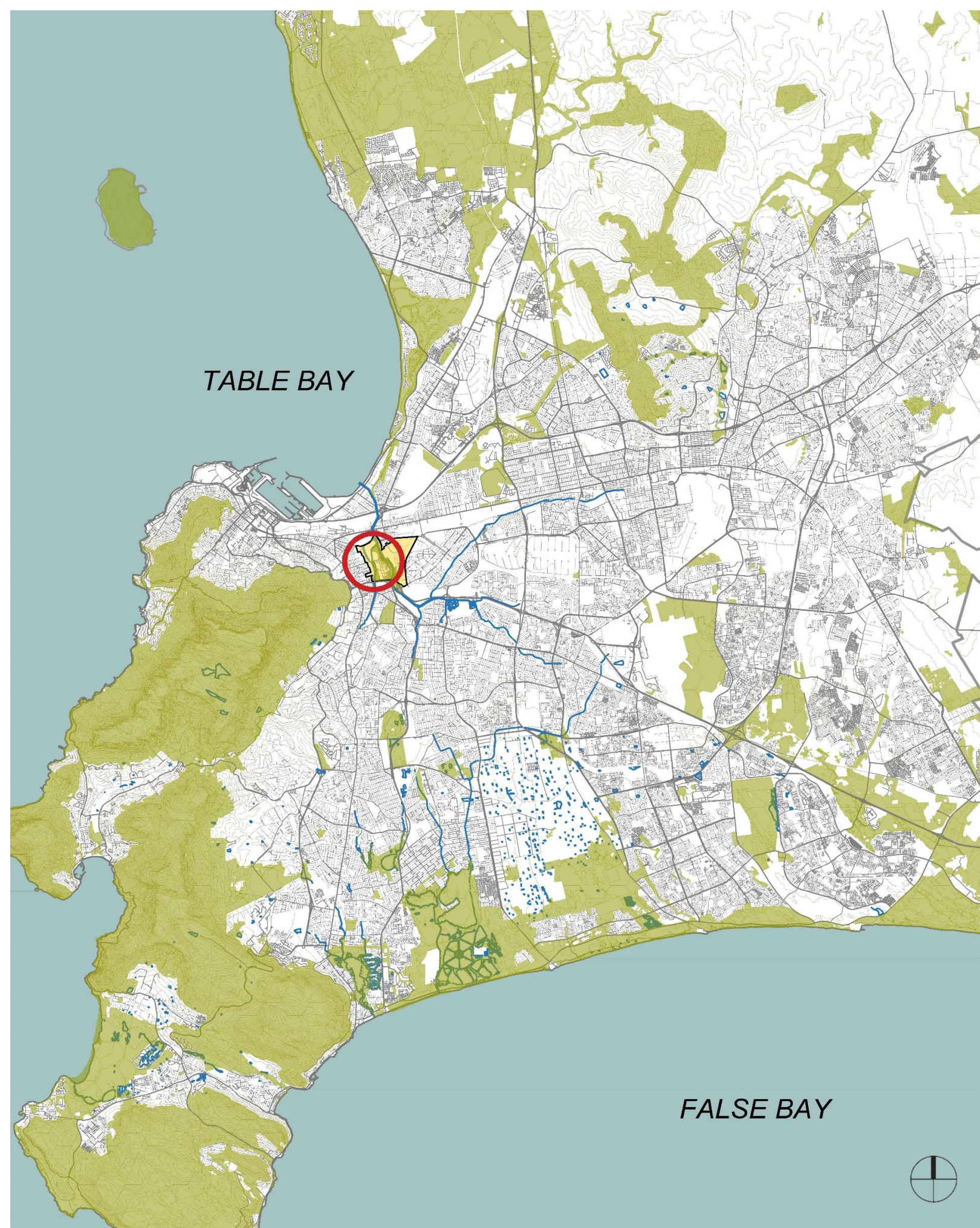
## HARTLEYVALE SPORTS PRECINCT CONTEXTUAL FRAMEWORK

### PROJECT DESCRIPTION

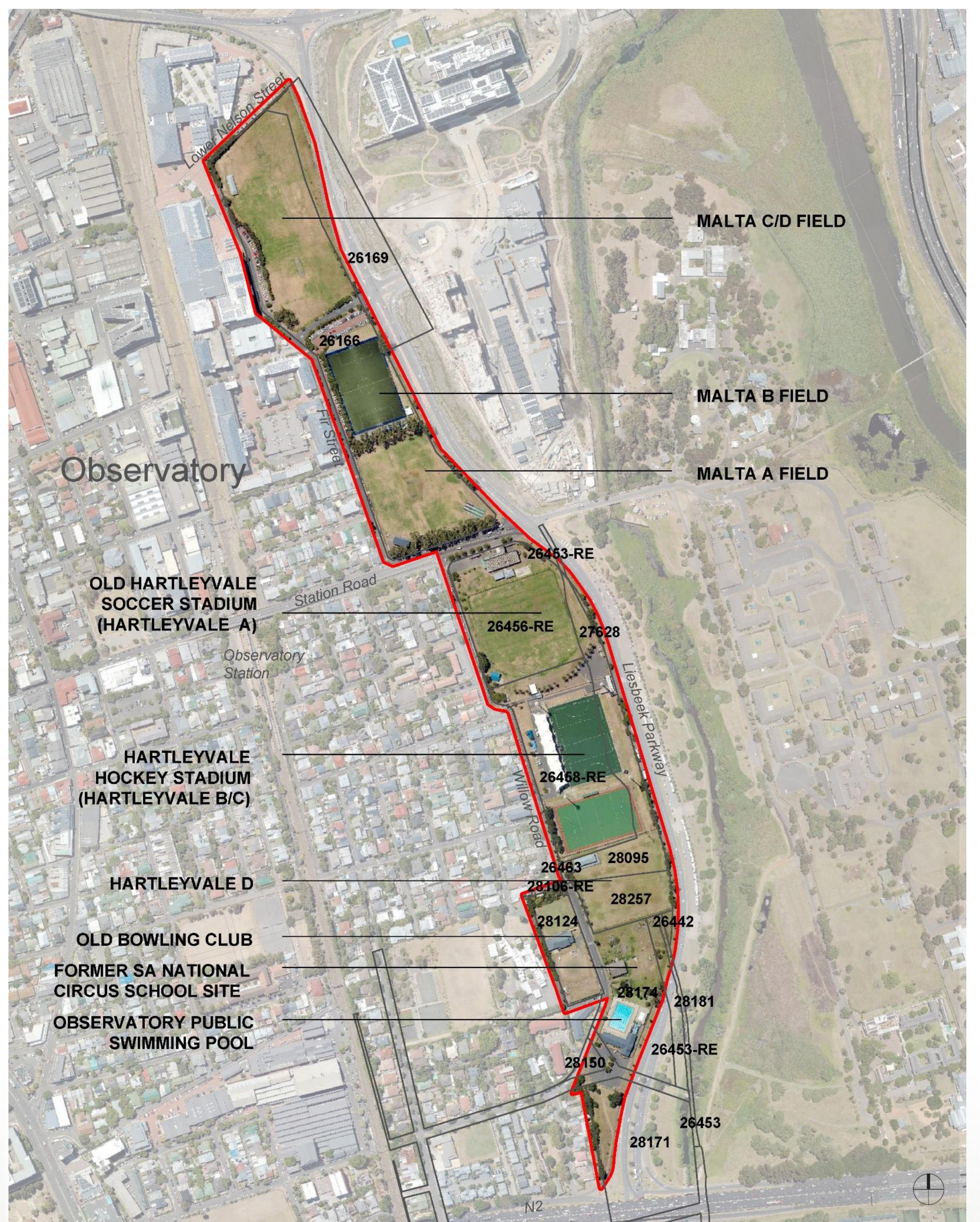
The City of Cape Town's (CoCT) Recreation & Parks Department aims to enhance facilities at the Hartleyvale Sports Precinct (HSP) using a holistic planning and design approach. A Contextual Framework is being developed to guide future decision-making and land-use planning for the Precinct. The framework includes a spatial analysis of the broader site context.

The draft Contextual Framework is informed by initial stakeholder input and aligns with the approved Two Rivers Local Spatial Development Framework (LSDF), 2020. Further input from the community will ensure that the Contextual Framework aligns with the community's current use of, future needs and vision for the Precinct.

#### METROPOLITAN SCALE



#### SITE SCALE



#### LOCAL SCALE



#### LOCALITY

The precinct is located in the inner City of Cape Town, within the suburb of Observatory and caters for a variety of users and sporting codes. It forms part of the broader Two Rivers Urban Park (TRUP) Site and is located near the confluence of the Liesbeek and Black River systems.

The HSP is bounded by Lower Nelson Street to the north, the N2 to the south, Liesbeek Parkway to the east and Fir Street extending into Willow Road to the west. It includes the Malta Park Sports Grounds above Station Road and the Hartleyvale Sports Complex, the former South African National Circus School site, Observatory Public Swimming Pool and the old Bowling Green site to the south of Station Road.

Surrounding developments include the Observatory Local Area, the new Riverlands Development, the Black River Office Park, the South African Astronomical Observatory, the Valkenberg Hospital, and the Mary Kihn School for Partially Hearing Children.